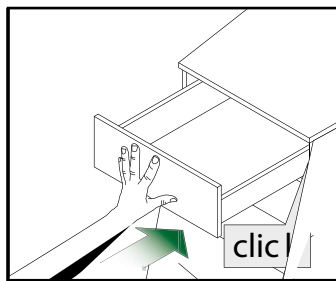
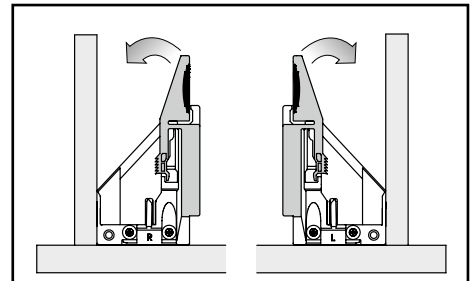


Poser le tiroir sur les coulisses.
Install the drawer on the slides.

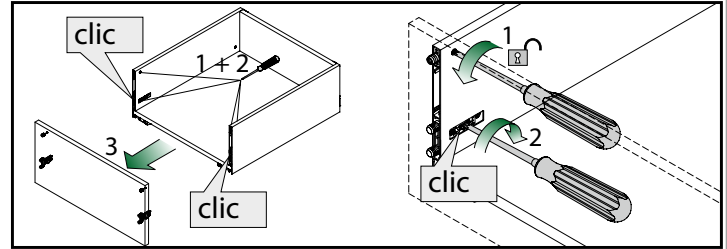
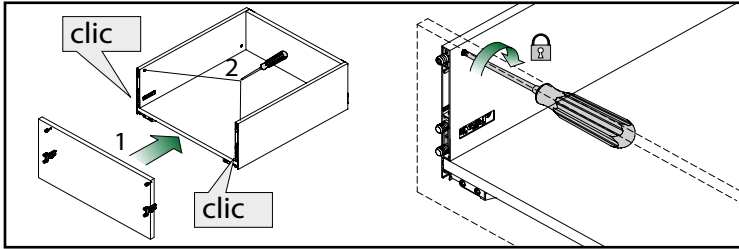


Fermer complètement le tiroir.
Le tiroir se bloque automatiquement.
Close the drawer fully to lock it to the slides.

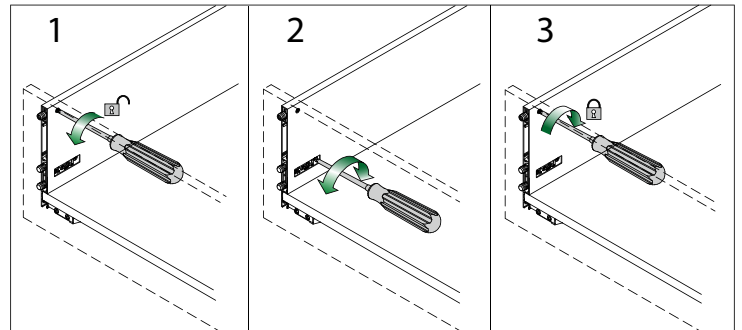
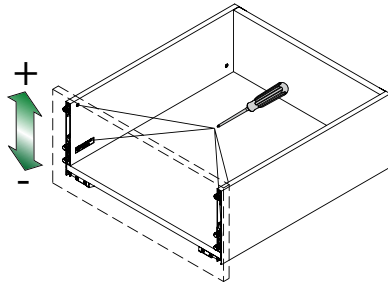


Appuyer sur les leviers pour retirer le tiroir.
Push both levers to remove the drawer.

Montage et démontage de la façade
Drawer front installation and removal

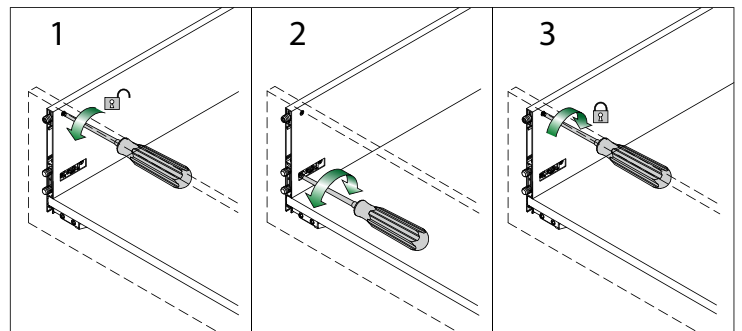
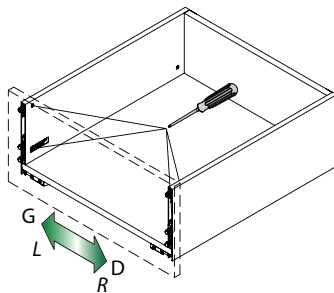


Réglage en hauteur par excentrique (+ 2 / - 1 mm)
Height adjustment with cam on both sides (+2/-1 mm)



Réglage latéral ($\pm 1,5$ mm)
Ajuster les deux côtés.

Side adjustment (± 1.5 mm)
Adjust both sides.



Réglage de l'inclinaison de la façade (+ 2.5 / -1.5 mm)
Ajuster les deux côtés.

Front tilt angle adjustment
(+2.5/-1.5 mm)
Adjust both sides.

