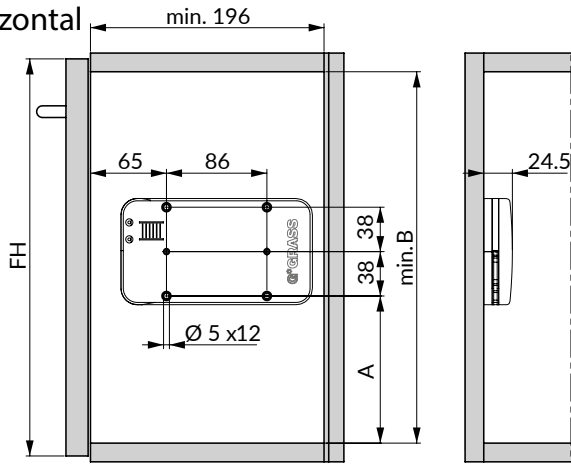


**V1**

horizontal

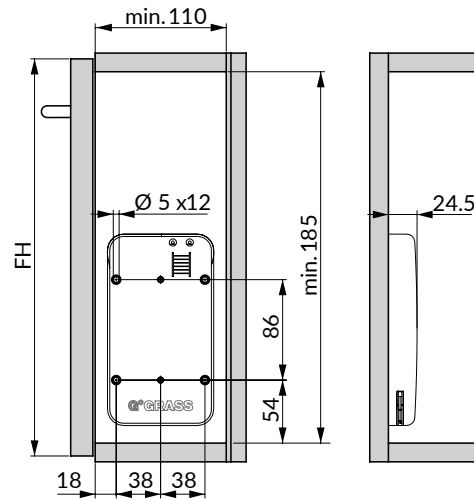
Position de perçage et encombrement  
Drilling location and displacement



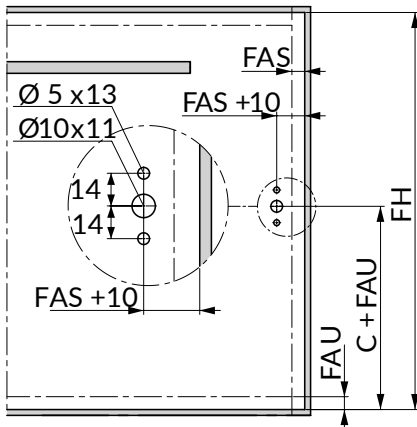
FH	A	B
200 - 330	102	194
330 - 430	126	218
430 - 480	136	228

**V2**

vertical



Montage sur porte en bois  
Wood door fixing



FH	C (V1)	C (V2)
200 - 330	137	161
330 - 430	161	161
430 - 480	171	161

Le joint minimum et le retrait sont en fonction de la charnière utilisée. Vous trouverez des charnières Tiomos pour abattant dans la section des pentures.

Minimum gap are related to specific hinge. You will find Tiomos flap hinges in the hinge section.

Légende

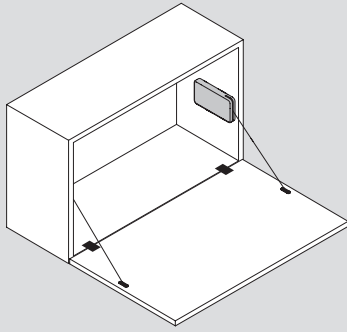
Legend

FAS Recouvrement façade latérale / Side overlay

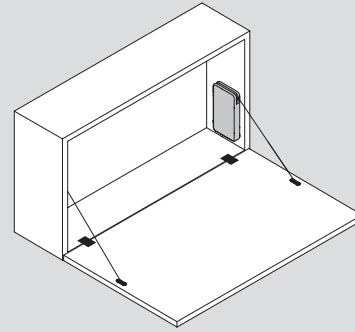
FAU Recouvrement façade en bas / Bottom overlay

FH Hauteur façade / Top of cabinet overlay

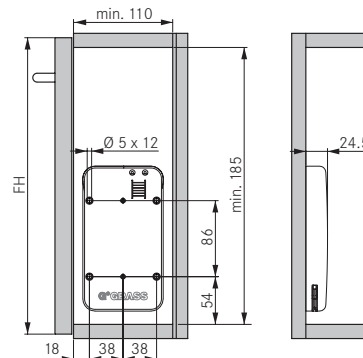
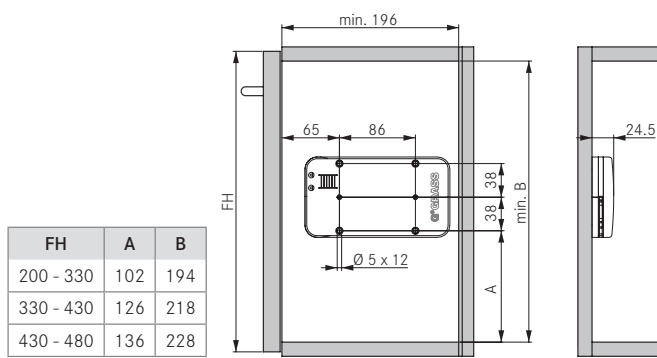
V1



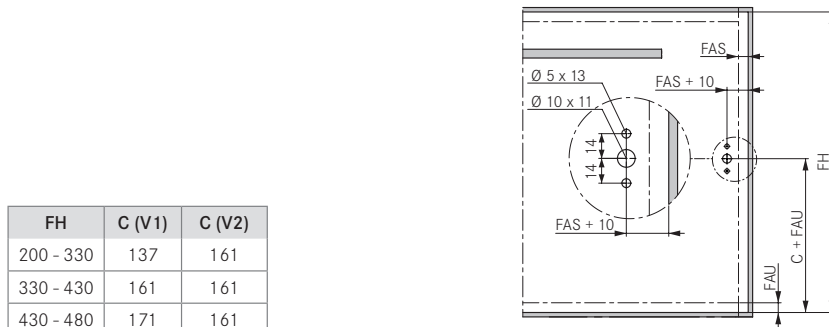
V2



Seitenbohrungen/Side panel drilling/Perçage lateral/Fortura spalla/Taladro costado



Türbohrungen/Door drilling/Perçage porte/Fortura anta/Taladro puerta

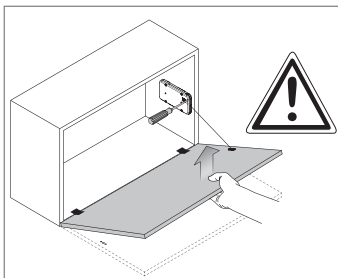
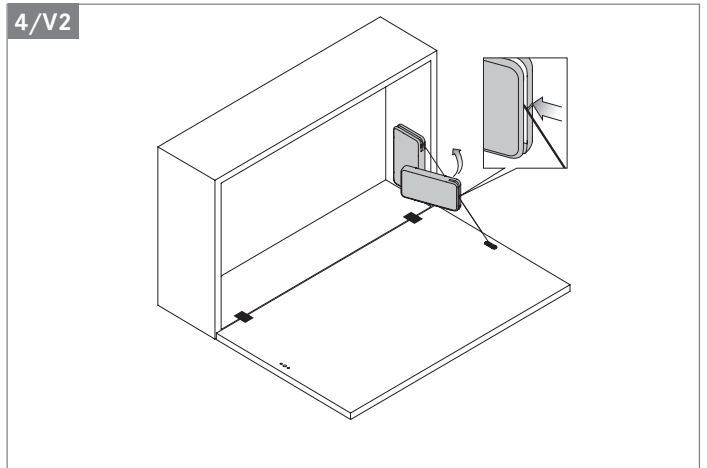
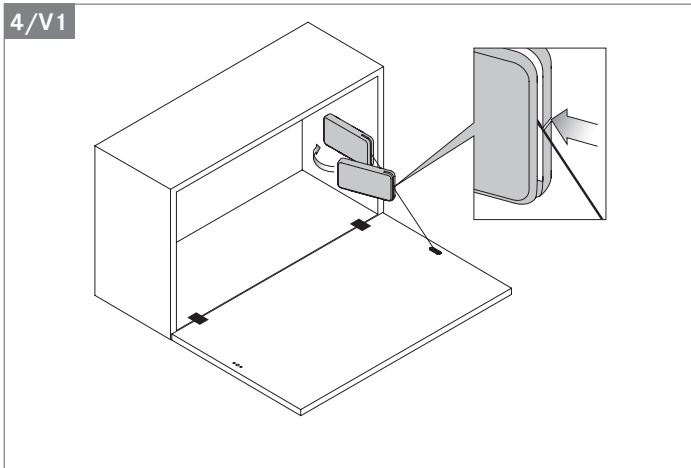
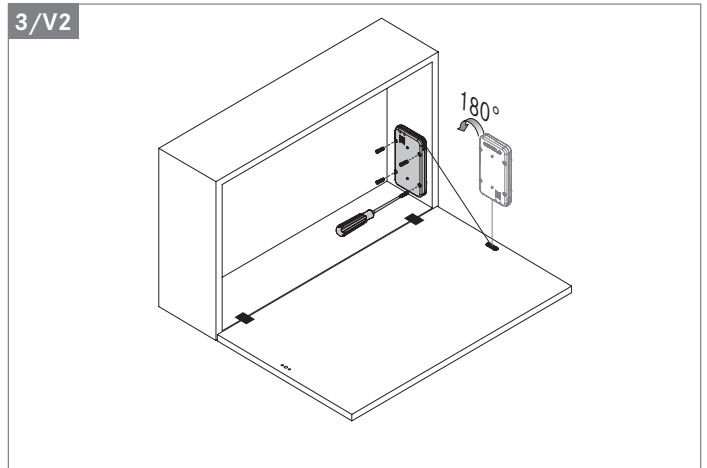
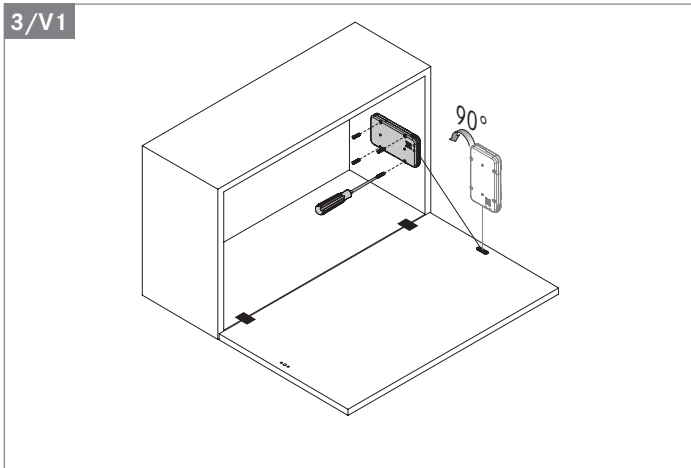
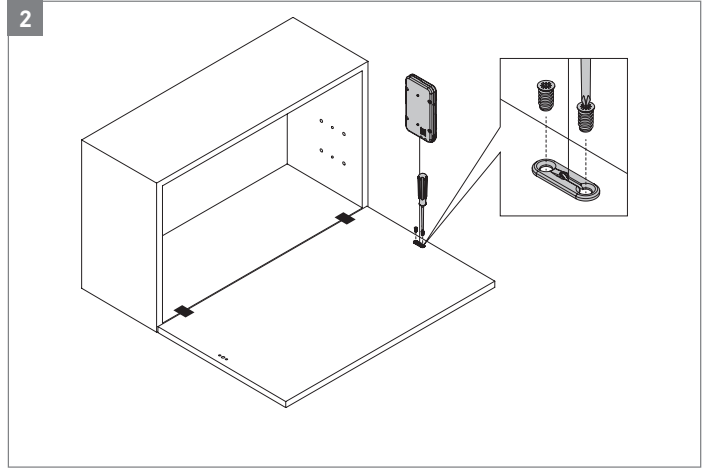
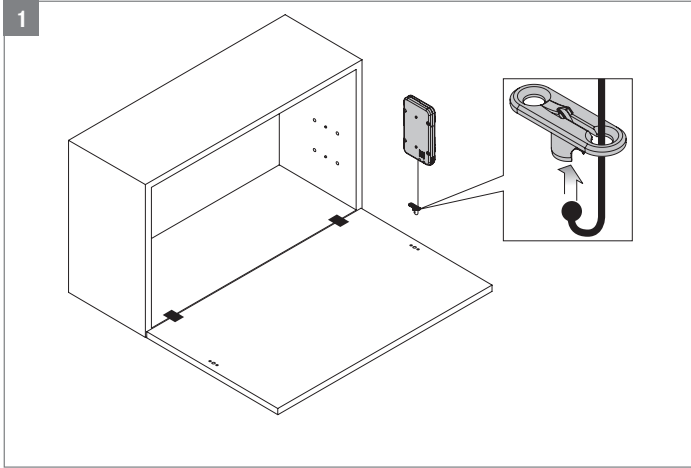


Tabellen der Türgewichte/Door weight tables/Tables poids des portes/Tabla pesi anta/Tablones pesos puertas

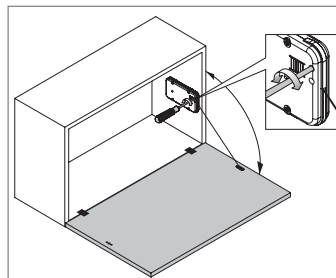
V1	Feder/Spring/Ressort/Molla/Muelle							
	60N		100N		160N		200N	
FH	Kinvaro D x1	Kinvaro D x2	Kinvaro D x1	Kinvaro D x2	Kinvaro D x1	Kinvaro D x2	Kinvaro D x1	Kinvaro D x2
200-230	4-4.8	-	4.2-6.2	-	5.8-8	-	7.2-10.4	-
230-270	3-4.4	6-8.4	3.6-5.2	6.8-9.6	5.2-7	-	6.8-8.6	-
270-330	2.9-3.8	5.6-7.8	3-4.6	6.4-8.8	4.6-6	8.6-11.8	6.4-7.8	-
330-380	2.7-3.7	5-8	3.2-4.3	6.5-8.5	4.3-5.7	8.7-11.1	5.5-7.1	11.9-13.5
380-430	2.9-3.6	4.5-6.1	3.1-3.9	5.7-7.3	4.5-6.1	8.5-10.1	5.4-6.9	10.9-12.6
430-460	2.7-3.1	4.3-6.1	2.7-3.9	5.9-8.3	4.1-4.9	8.3-9.5	5.3-5.7	10.1-11.5
460-480	2.5-2.9	4.1-5.7	2.8-3.8	5.3-7.7	3.8-4.8	7.2-9.6	5.4-5.6	9.8-11.4

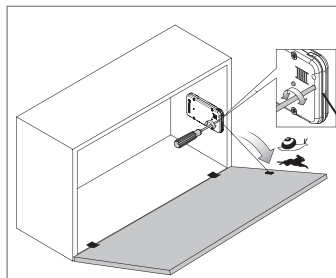
V2	Feder/Spring/Ressort/Molla/Muelle							
	60N		100N		160N		200N	
FH	Kinvaro D x1	Kinvaro D x2	Kinvaro D x1	Kinvaro D x2	Kinvaro D x1	Kinvaro D x2	Kinvaro D x1	Kinvaro D x2
200-230	4.1-5.9	-	5.3-7.3	-	-	-	-	-
230-270	3.3-4.8	6.8-9.6	4.2-6	9.6-12.8	-	-	-	-
270-330	3.2-4.5	6.3-8.1	3.8-5.1	7.9-11.1	5.3-6.5	10.7-12.9	-	-
330-380	2.6-3.4	5-6.5	3.3-4.5	7.3-8.5	4.8-5.6	9.8-11.4	6.7-7.3	11.8-13
380-430	2.5-3.4	5-6.2	3.2-4.2	6.2-8.2	6.1-8	9-10.4	5.9-6.6	13.3-14.9
430-460	2.3-3	4.6-6.2	3-3.8	6.2-7.8	4.6-5.4	12.9-15.5	5.6-6	11.4-12.2
460-480	2.4-3.2	4.6-6	2.8-4	5.6-7.8	4.5-5.4	8.8-10.4	5.4-6	10.8-11.6



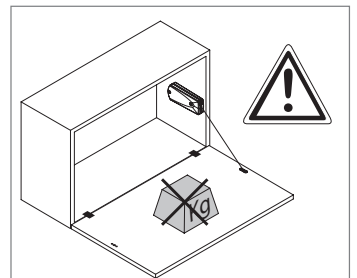
**Während der Einstellung Türgewicht erleichtern**/Lighten up door during the adjustment/Alléger poids de la porte pendant le réglage/Scaricare peso anta durante la regolazione/Aligerar peso de la puerta durante el ajuste



**Einstellung des Öffnungswinkels**/Opening angle adjustment/Réglage de l'angle d'ouverture/Regolazione angolo di apertura/Regulación del ángulo de apertura



**Einstellung der Öffnungsgeschwindigkeit**/Opening speed adjustment/Réglage de la vitesse d'ouverture/Regolazione velocità apertura/Regulación de la velocidad de apertura



**Die Tür nicht mit Zusatzgewichten laden**/Do not load the door with additional weights/Ne chargez pas la porte avec poids supplémentaires/Non caricare l'anta con pesi aggiuntivi/No cargue la puerta con pesos adicionales