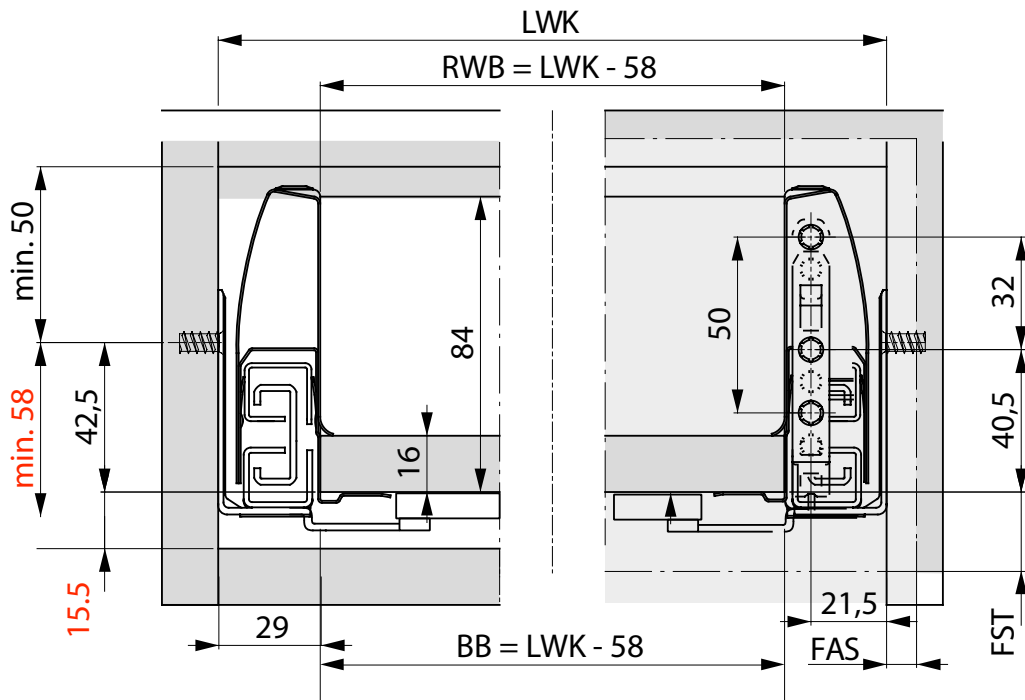
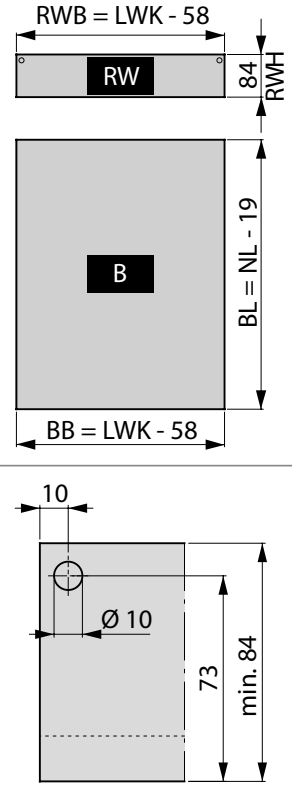


Nova Pro H90 avec coulisse TMSC
 Dimension d'installation coulisse TMSC
 Front panel installation dimensions TMSC slides

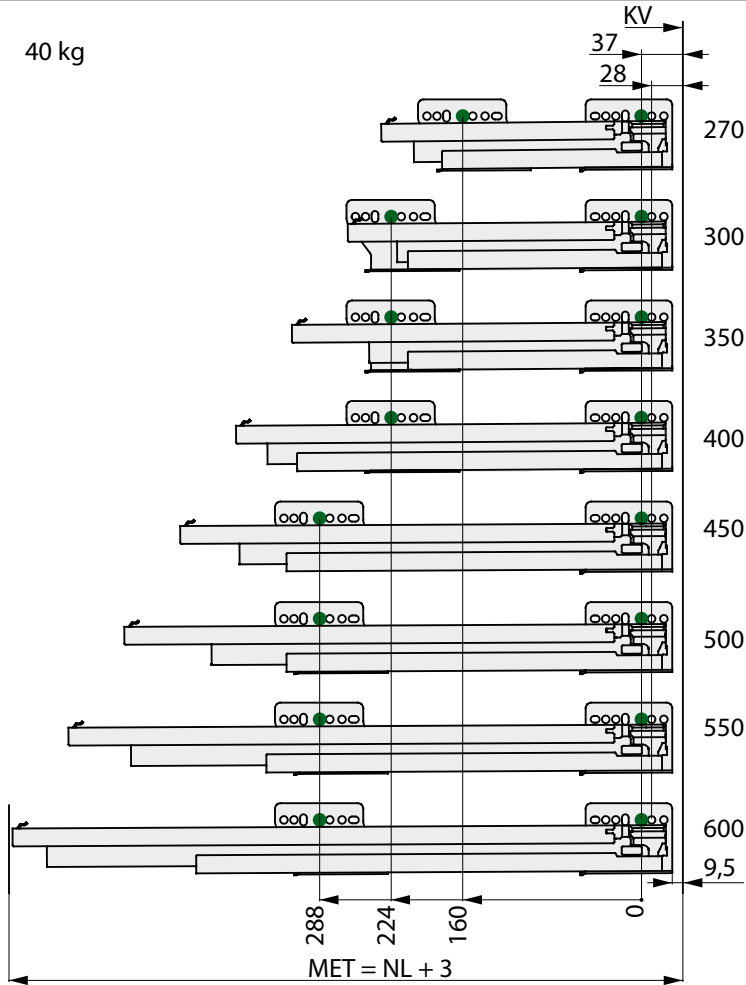


Dimensions du dos et du fond
 Back and bottom dimensions

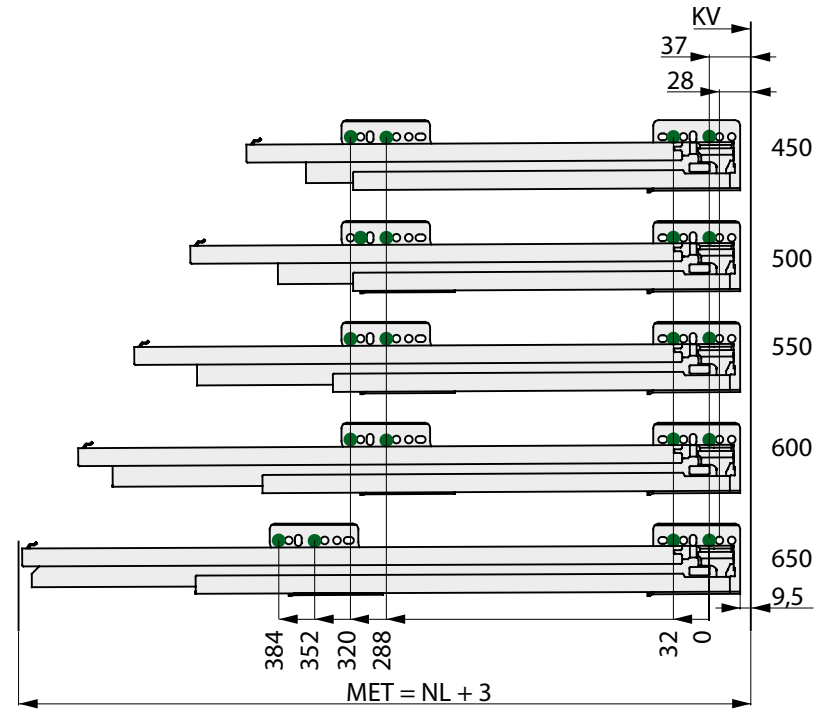


Dimensions d'installation du dos
 Back panel installation dimensions

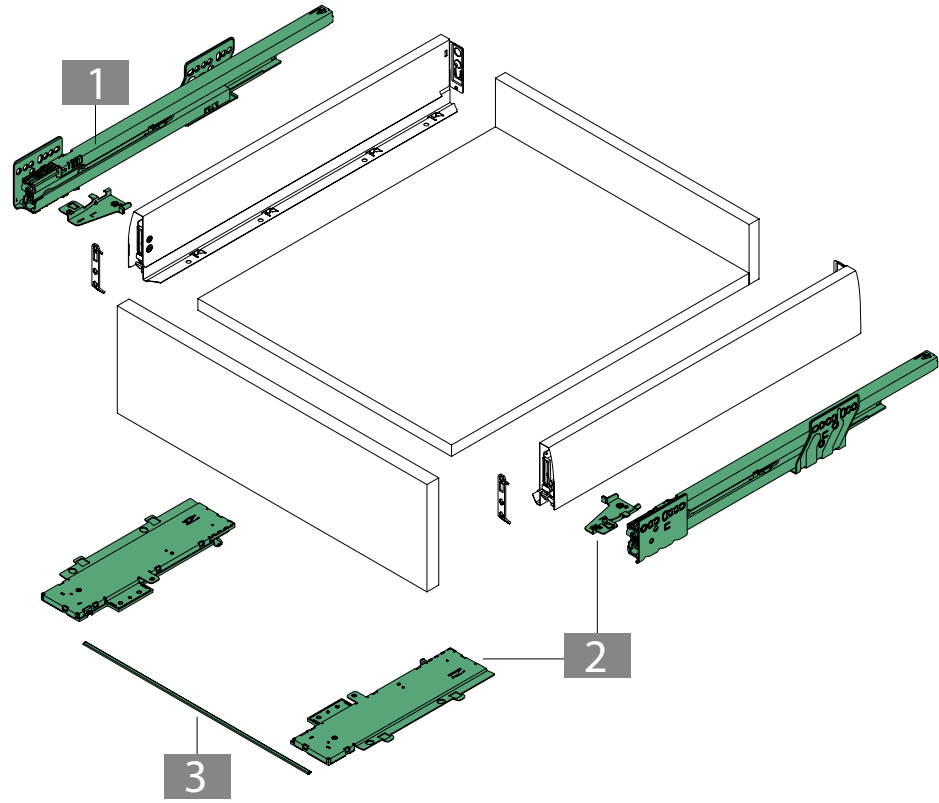
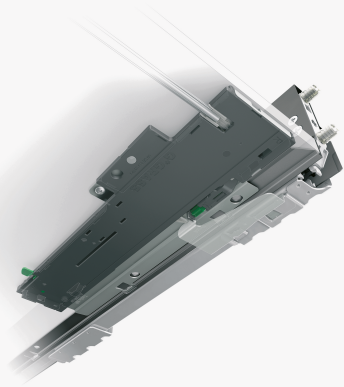
40 kg



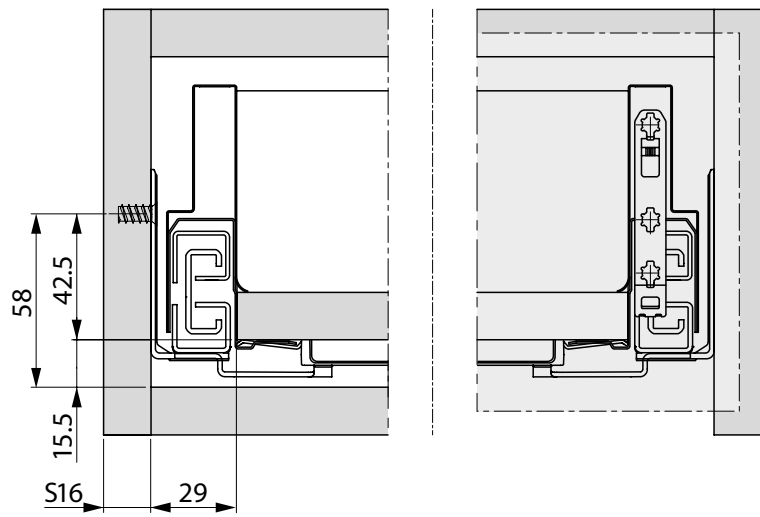
70 kg



B	Fond du tiroir / Drawer bottom	NL	Longueur nominale / Nominal length	FST	Recouvrement de façade / Front overlay
BB	Largeur du fond / Bottom panel width	RW	Dos / Back panel	KV	Chant avant du caisson / Front edge of cabinet
BL	Longueur du fond / Bottom panel length	RWB	Largeur du dos / Width of back panel	LWK	Largeur intérieure du caisson / Inside cabinet width
FAS	Recouvrement de façade latérale / Front overlay, side	RWH	Hauteur du dos / Height of back panel	MET	Profondeur d'installation du tiroir / Drawer installation depth



- 1 COU-NOV-TMSC-xxx
- 2 COU-NOV-TIPSOFT
- 3 SYN-BAR DYN-TMSC



Barre de synchronisation	Écart minimum de la façade
<p>LWK - 208</p>	<p>FR</p> <p>min. 2.5</p>

Synchronisation rod

Minimum gap to release the drawer