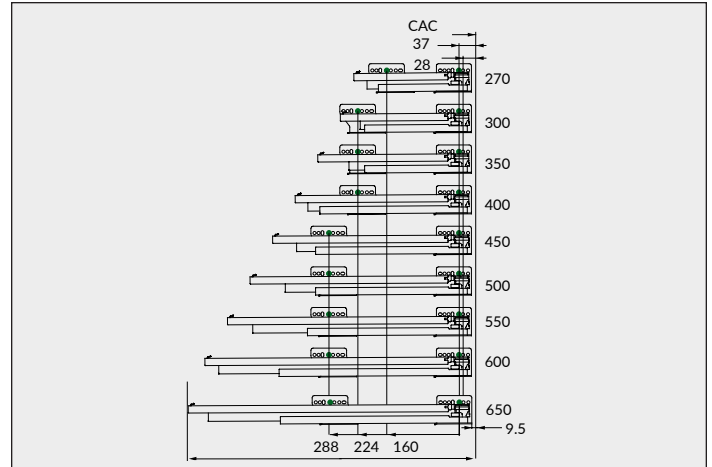
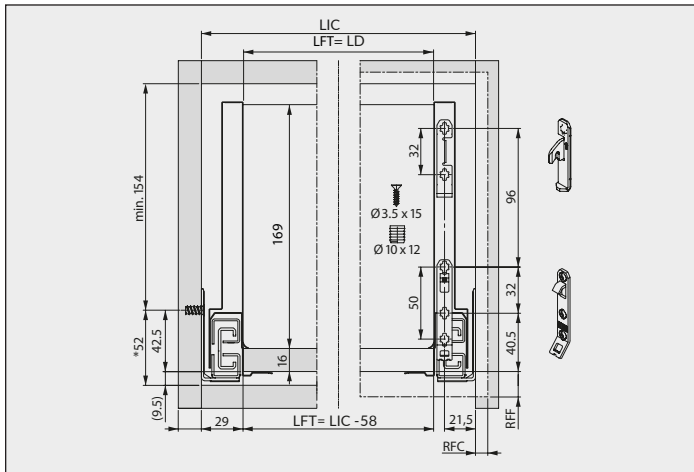


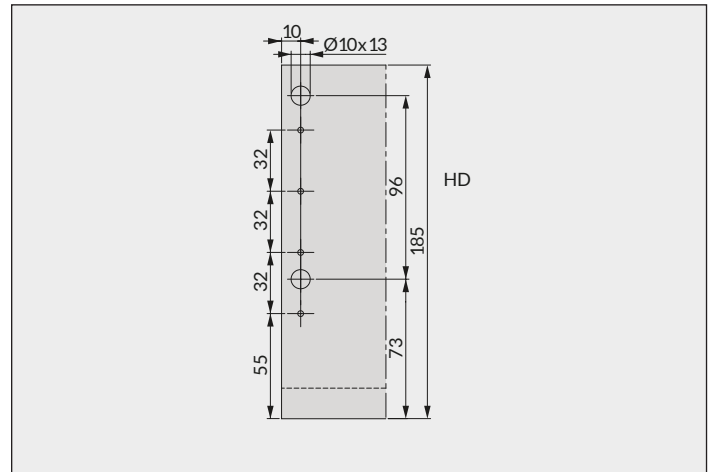
Fond et dos/bottom and back  
LN = Longueur nominale/ nominal length  
LIC=Largeur intérieur caisson/ Inside cabinet width



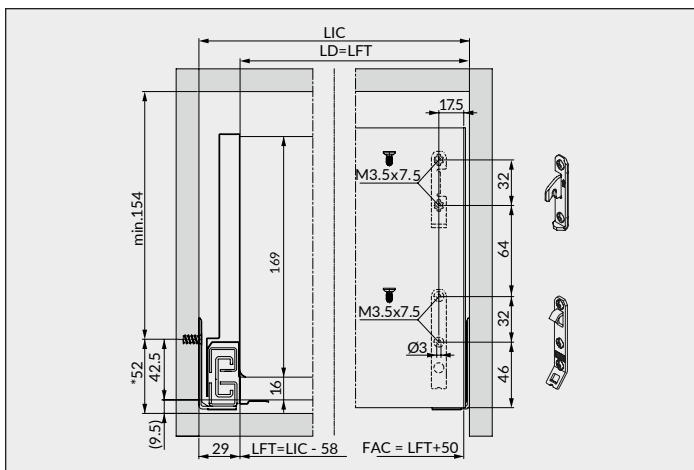
CAC= chant avant du caisson/ cabinet front edge



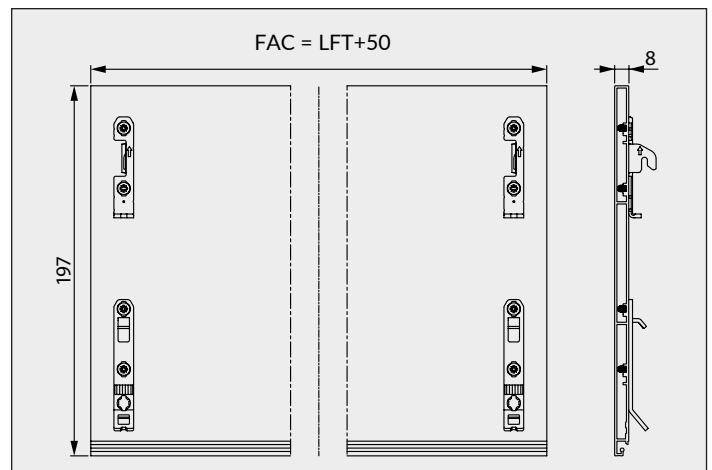
LIC = Largeur intérieure caisson/Inside cabinet width  
LFT = Largeur fond du tiroir/ Inside cabinet width  
LD = Largeur du dos/ Drawer back width



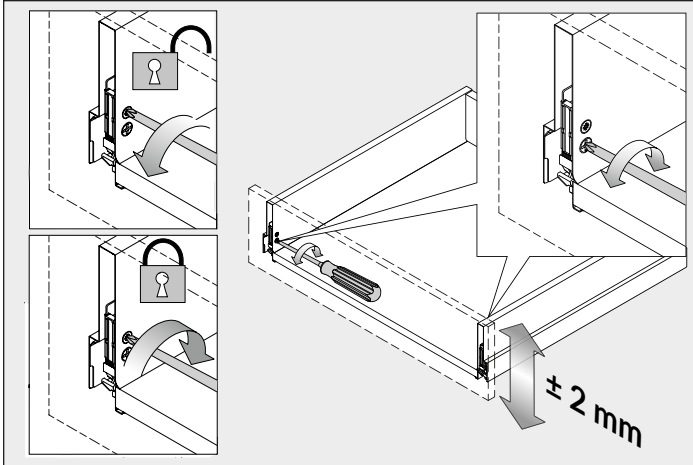
Perçage et dimensions du dos/ Back dimensions and drilling.



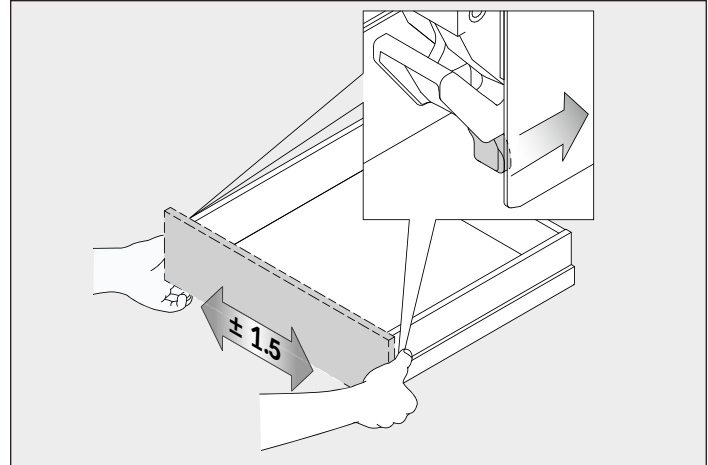
Implantation du tiroir intérieur/ Inset drawer installation  
FAC= Façade d'aluminium/ Aluminum drawer front



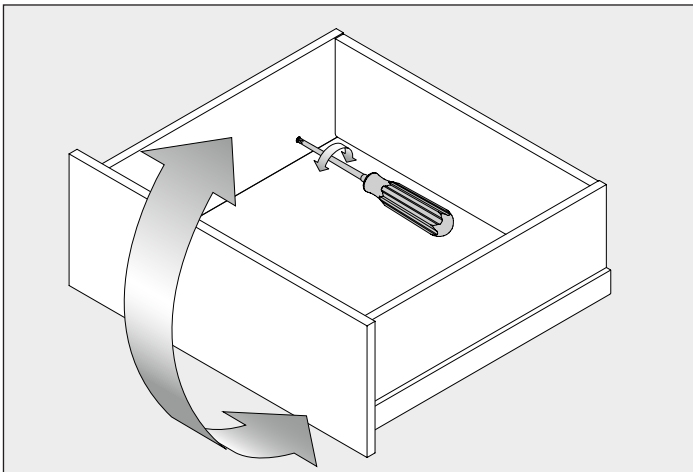
Coupe de façade sur mesure/ Cut to size drawer front  
FAC= Façade d'aluminium/ Aluminum drawer front



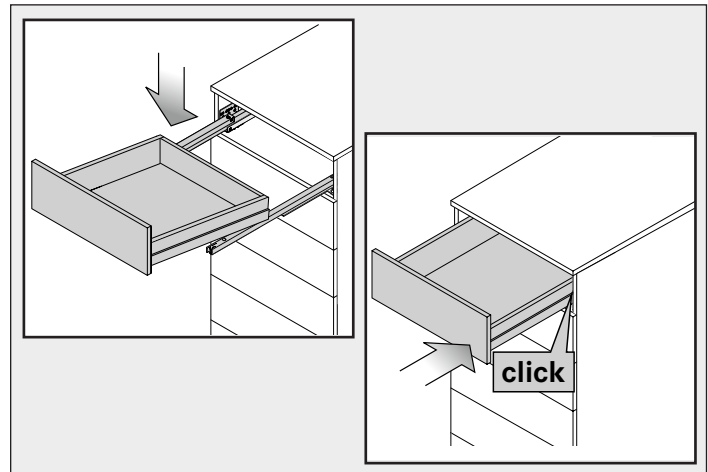
Déverrouiller pour ajuster la hauteur  
Unlock to adjust the height



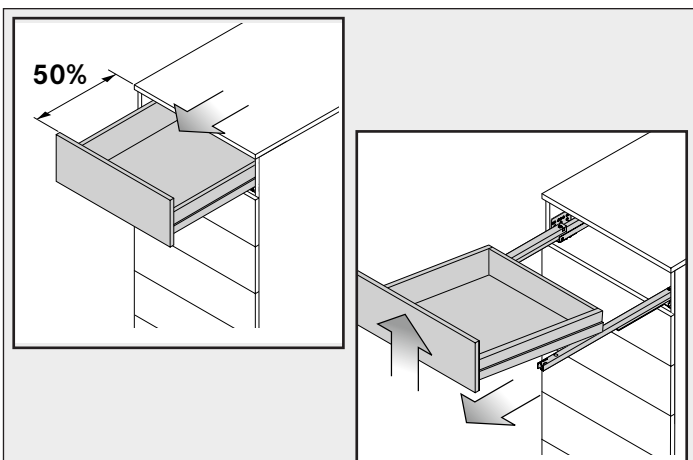
Pousser sur les leviers pour déplacer la façade de gauche à droite  
Push on the lever to move the drawer face from left to right.



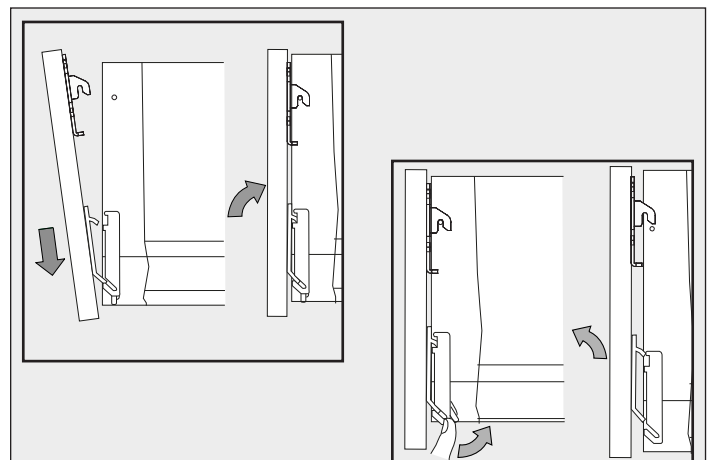
Ajustement de l'inclinaison du tiroir sur vis à came  
Tilt adjustment on came screw.



Tirer les coulisses, poser le tiroir dessus et refermer.  
Extend the slides, put the drawer on them and close it.



Ouvrir le tiroir à mi-course et soulever l'avant pour l'enlever  
Open the drawer halfway, lift off the drawer to remove.



Montage et démontage de la façade sans outils.  
Mounting and removing the drawer front without tools.