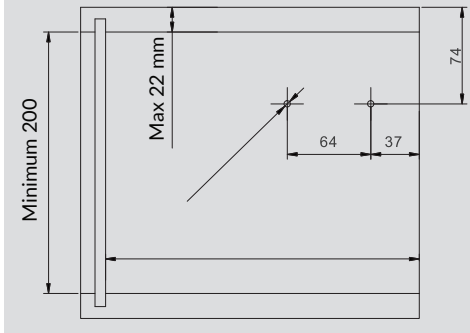


## Préperçage de positionnement

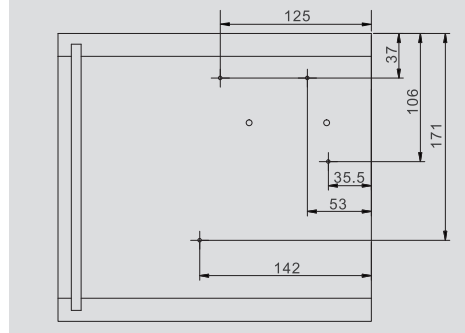
### Peg position and space requirements



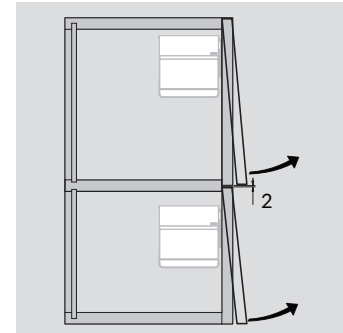
Hauteur intérieur du caisson (min 200)  
Épaisseur maximum du dessus 22 mm  
Inside cabinet height (min. 200)  
Top maximum thickness 22 mm

## Dimensions de montage d'installation

### Fixing position



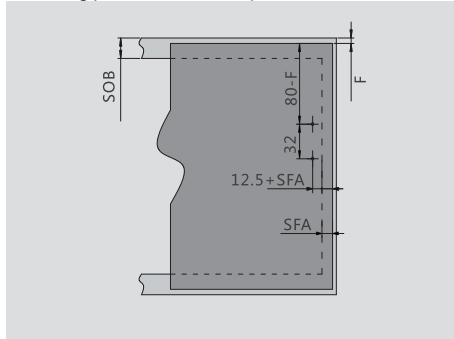
Fixation avec vis à bois 4 x 38 mm  
Mounting with 4 x 38 mm wood screws



Espacement minimum entre les portes (2 mm)  
Minimum gaps between the doors (2 mm)

## Fixation de la plaque de montage dans la porte

### Mounting plate door assembly

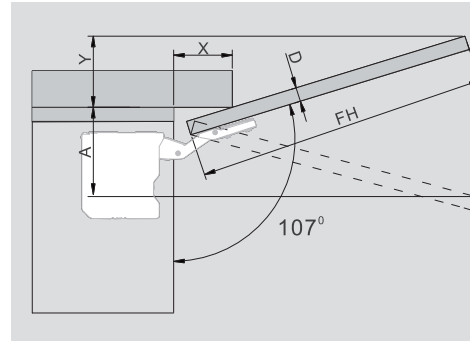


Montage avec 4 vis à bois  
SFA=Recouvrement de la porte sur le côté du caisson  
F= Espacement entre les portes

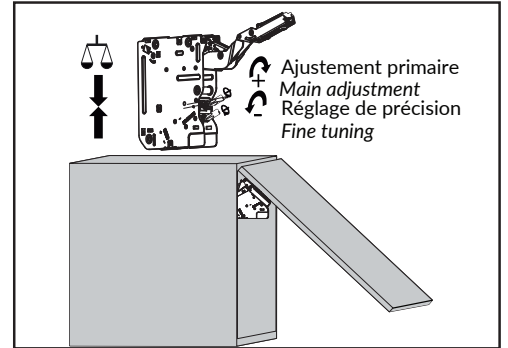
Wood screws (4) for wood door  
SFA= Door overlay of the side panel.  
F= Gap between doors

## Dégagement pour moulure de tête

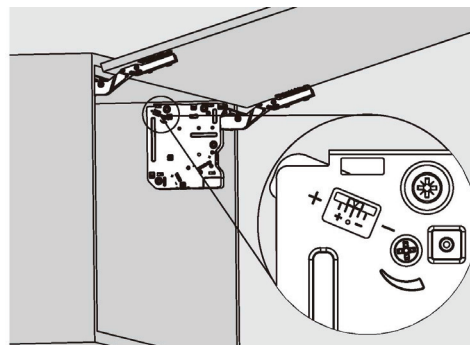
### Crown moulding clearance



D (mm)	16	19	22	26	28
X (mm)	70	58	49	35	26
Ouverture à 107° 107° opening	Espace requis (mm) Space requirement (mm)				
	Y=FH X 0.29-15+D				



Réglage de la position arrêtée de la porte  
Door stay put adjustment

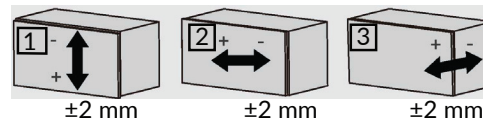
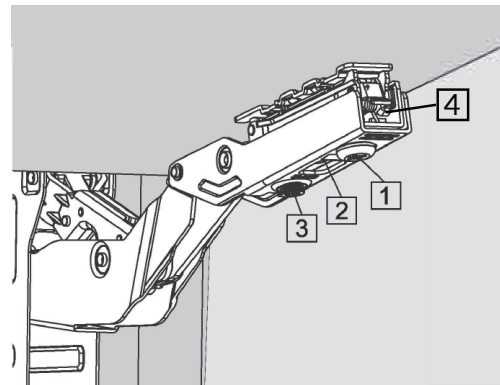


"- Pour réduire le temps de freinage de la fermeture, tourner la vis dans le sens horaire.

"+" Pour augmenter le temps de freinage de la fermeture, tourner la vis dans le sens antihoraire.

"-" Reducing soft-closing time (turn adjustment screw clockwise)

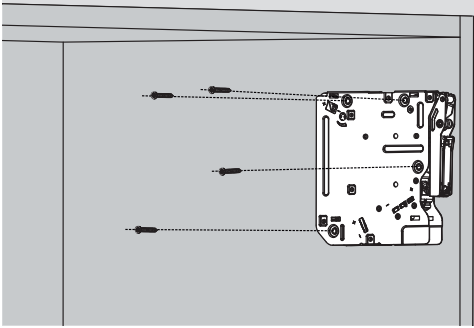
"+" Increasing soft-closing time (turn adjustment screw counter-clockwise)



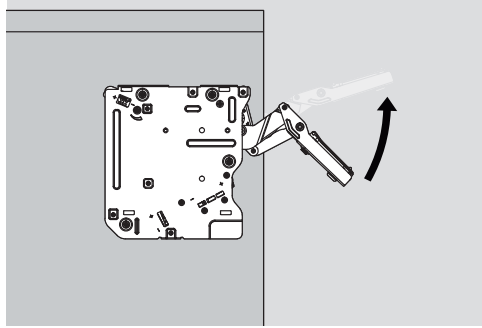
4 Clip pour démonter la porte.  
Door removal clip

## Assemblage dans le caisson

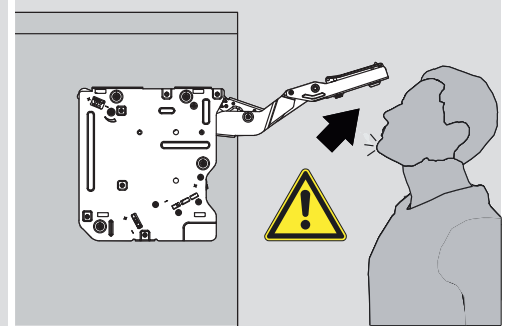
### Mounting in the cabinet



Montage dans le caisson avec vis euro  
Cabinet mounting with euro screw

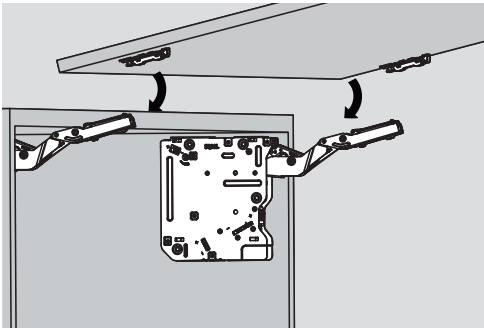


Attention lors de l'ouverture  
Caution when opening arm

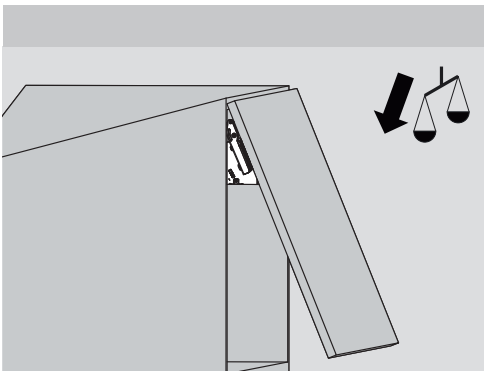
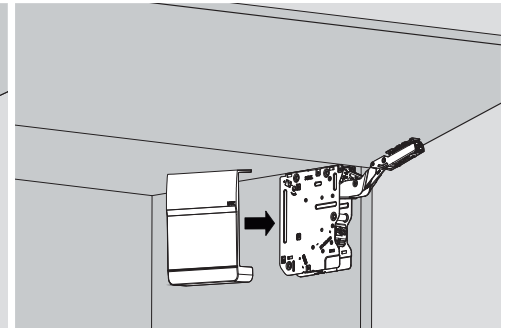
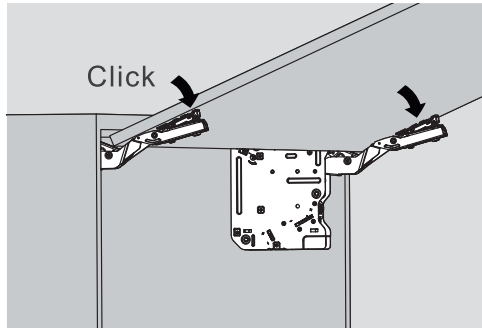


Le bras de ce système est sous tension et peut causer des blessures. Ne pas le redescendre sans la porte.

*The arm of this device could spring up and cause injury. Do not push the arm down without the door attached.*



Assemblage de la porte  
Door assembly



Réglage de la position arrêté de la porte  
Hovering adjustment

